



# WEBINAR



Baristas: Mike, David, and Timothy



# Today's Menu

## Jazzit with Java

- ✓ What is Jazzit with Java?
- ✓ What's new highlights
- ✓ Upcoming events
- ✓ Did you know...?



# What is Jazzit with Java?

A conversation about Jazzit, including topics like:

- Recent changes to Jazzit
- What we are currently working on
- Upcoming events
- Announcements
- Did you know...?





# What's new highlights

Recent updates to Jazzit



jazzit  
with java

## CA, CB, IA Amortization working papers

- We have added a group cleanup option to these working papers

Global amortization options

Reporting period set to 365 / 365 days = 100% of normal amortization. Half year amortization is calculated on all ad

**Buildings** CCA class: **MA** Date method: **Declining balance** Rate unit: **%** Group rate: **4**


No reconciliation t

	Disposals	Cost	Procee
	2018	2018	On Dispos
Old manufacturing plant	-	2,555,273.00	-
Widget Manufacturing plant	-	1,023,064.30	-
	-	-	-
	-	-	-
	-	-	-
	-	-	-
	-	-	-
	-	-	-
	-	-	-
	-	-	-



# TX Income taxes working paper

- The RDTOH is now split between ERDTOH and NERDTOH

 **Refundable dividend tax on hand (RDTOH) carryforward**

	Eligible refundable dividend tax on hand (ERDTOH)	Non-eligible refundable dividend tax on hand (NERDTOH)	Total
<b>For tax years starting January 1, 2019 and after</b>			
For tax years starting January 1, 2019 and after	-	-	
For tax years starting December 31, 2018 and before			
Additions during the year - Part I		-	
Additions during the year - Part IV	-	-	-
Amounts recovered during the year	-	-	-
Balance, end of year	-	-	





## CP Home menu

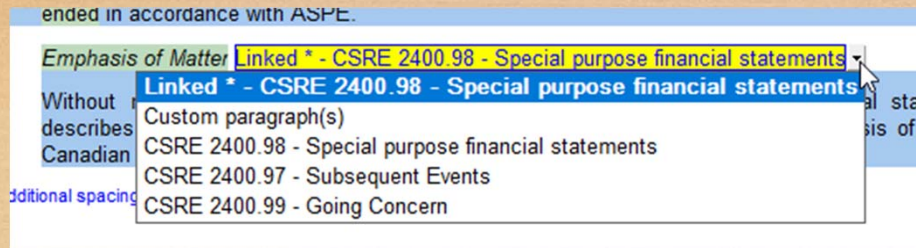
- A future update to the home menu will include colors on update buttons. This will also be applied to the RC update control documents.

Compare to Resource Centre (RC)	Status	Current File	RC revised
Home menu	✓	October 24, 2019	October 24, 2019
Title page	✓	April 19, 2019	April 19, 2019
Index to financial statements	✓	September 27, 2019	September 27, 2019
Engagement report	✓	September 27, 2019	September 27, 2019
Balance sheet	⚠	September 26, 2019	September 27, 2019
I/S, Exp Sch, Stmt of R/E	✓	May 31, 2019	May 31, 2019
Cash flows	✓	September 27, 2019	September 27, 2019
Notes menu	✓	April 19, 2019	April 19, 2019
Headers and footers	✓	February 22, 2019	February 22, 2019
Notes and policies	✓		



## RP / JZEL Review engagement report

- We are adding an “emphasis of matter” paragraph with samples to the CSRE 2400 report.



- We are also linking more options in the engagement letter sample report to the selections made in the financial statements. The settings are also included in the global settings reset button.





# Upcoming events

Some of the events coming up:

- Jazzit classroom training
  - ✓ Calgary November 12 – 14<sup>th</sup>
  - ✓ Edmonton November 19 – 21<sup>st</sup>
  - ✓ Vancouver December 3 – 5<sup>th</sup>
- CPA BC Public Practice Insights – November 26<sup>th</sup>
- Customer survey – draw for \$500 Amazon card



# Reminder....CaseWare 2019

A reminder to our Jazzit Administrators that the Jazzit templates will be moving to CaseWare 2019 format effective November 29<sup>th</sup>.

We will be archiving the last CaseWare 2018 build on that date as well.



# Did you know...?

Let's share a few ideas to save time



jazzit  
with java



# Balance sheet signatures side-by-side

- Show two signatures side-by-side at the bottom of your balance sheet (instead of stacked).

Page Break, Next Page

### Balance Sheet

September 30, 2018 ▾

1-2 year classified b/s ▾

Statement Headings Rounding

Statement title: Balance Sheet ▾

Entity: ▾

Reminder to link to generic note number: On ▾

☐ Show balance sheet on two pages

Signature lines: Manual ▾

Additional spacing above signature heading: none ▾

Additional spacing below signature heading: none ▾

Additional between signature lines: none ▾

Number of signature lines: Two ▾

Signature heading: ON BEHALF OF THE BOARD ▾

Show 2 signatures: Side by side ▾

ON BEHALF OF THE BOARD

\_\_\_\_\_*Director* \_\_\_\_\_*Director*



# Linking generic notes to the balance sheet

- If you have generic notes within your financial statements you can link the description, current and prior year balances of these notes to your balance sheet by *double-clicking on the link number* instead of clicking on the popup menu.

Accounts receivable{N#}	1060	C	4,114,813	5,500,114	115.1060+116.1061
Accounts receivable from employees{N#}	1071	C	-	-	115.1071
Trade accounts receivable from related parties{N#}					115.1064
Inventory{N#}					125.1120
Work in progress{N#}					125.1125
Income taxes recoverable{N#}					217.2680.0*

Link to generic note

Cell Label	Cell Value
Inventories	Inventories[857063 792799 Generic 2a





# Multi-year income statement with percent

- Did you know the JZ5YRIS working paper (five period income statement with %) can be included in your financial statements as an external schedule?

Reload from Resource Centre ☒ Status: ☒ Document: ☐

Five period income statement with % column options

Format: Financial statements -

Period: Year Ended September 30, 2019

## JAZZIT CONSOLIDATION EXAMPLE Consolidated Five Year Income Statement With Percent Year Ended September 30, 2019

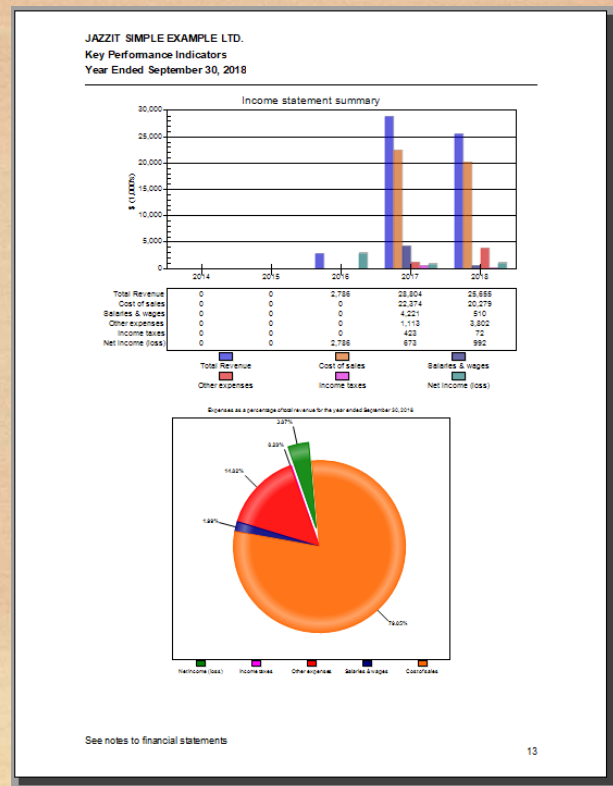
	Division 10 2019	%	Division 20 2019	%	Division 10 2018	%	Division 20 2018	%	Consolidated 2019	%
<b>TRADE SALES</b>	<b>\$ 16,602,456</b>	<b>100.00</b>	<b>\$ 5,534,152</b>	<b>100.00</b>	<b>\$ 15,536,663</b>	<b>100.00</b>	<b>\$ 5,178,888</b>	<b>100.00</b>	<b>\$ 22,136,608</b>	<b>100.00</b>
<b>COST OF SALES</b>										
Opening Inventory	15,209,610	91.61	5,069,870	91.61	6,569,870	42.29	4,000,000	77.24	20,279,480	91.61
Purchases	4,750,000	28.61	1,250,000	22.59	26,483,300	170.46	5,600,250	108.14	6,000,000	27.10
Closing Inventory	19,959,610	120.22	6,319,870	114.20	33,053,170	212.75	9,600,250	185.38	26,279,480	118.71
	(3,750,000)	(22.59)	(1,250,000)	(22.59)	(15,209,610)	(97.89)	(5,069,870)	(97.89)	(5,000,000)	(22.59)
<b>COST OF SALES</b>	<b>16,209,610</b>	<b>97.63</b>	<b>5,069,870</b>	<b>91.61</b>	<b>17,843,560</b>	<b>114.86</b>	<b>4,530,380</b>	<b>87.49</b>	<b>21,279,480</b>	<b>96.12</b>
<b>GROSS PROFIT</b>	<b>392,846</b>	<b>2.37</b>	<b>464,282</b>	<b>8.39</b>	<b>(2,306,897)</b>	<b>(14.86)</b>	<b>648,508</b>	<b>12.51</b>	<b>857,128</b>	<b>3.88</b>
<b>FEEs</b>										
Consulting fees	184,709	4.69	61,570	4.69	66,056	1.09	22,019	1.09	248,278	4.69
Management fees	3,750,000	95.31	1,250,000	95.31	6,000,000	98.91	2,000,000	98.91	5,000,000	95.31
	3,934,709	100.00	1,311,570	100.00	6,066,056	100.00	2,022,019	100.00	5,248,278	100.00
<b>EXPENSES</b>	<b>2,860,225</b>	<b>13.93</b>	<b>953,409</b>	<b>13.93</b>	<b>2,535,665</b>	<b>11.75</b>	<b>845,222</b>	<b>11.75</b>	<b>4,377,666</b>	<b>15.99</b>
<b>INCOME BEFORE DISCONTINUED OPERATION</b>	<b>1,467,330</b>	<b>7.14</b>	<b>822,443</b>	<b>12.01</b>	<b>1,223,494</b>	<b>5.66</b>	<b>1,825,305</b>	<b>25.35</b>	<b>1,725,740</b>	<b>6.30</b>
<b>EXTRAORDINARY ITEM</b>	<b>-</b>	<b>-</b>	<b>-</b>	<b>-</b>	<b>-</b>	<b>-</b>	<b>-</b>	<b>-</b>	<b>729,758</b>	<b>2.67</b>
<b>NET INCOME</b>	<b>\$ 1,467,330</b>	<b>7.14</b>	<b>\$ 822,443</b>	<b>12.01</b>	<b>\$ 1,223,494</b>	<b>5.66</b>	<b>\$ 1,825,305</b>	<b>25.35</b>	<b>\$ 995,982</b>	<b>3.83</b>





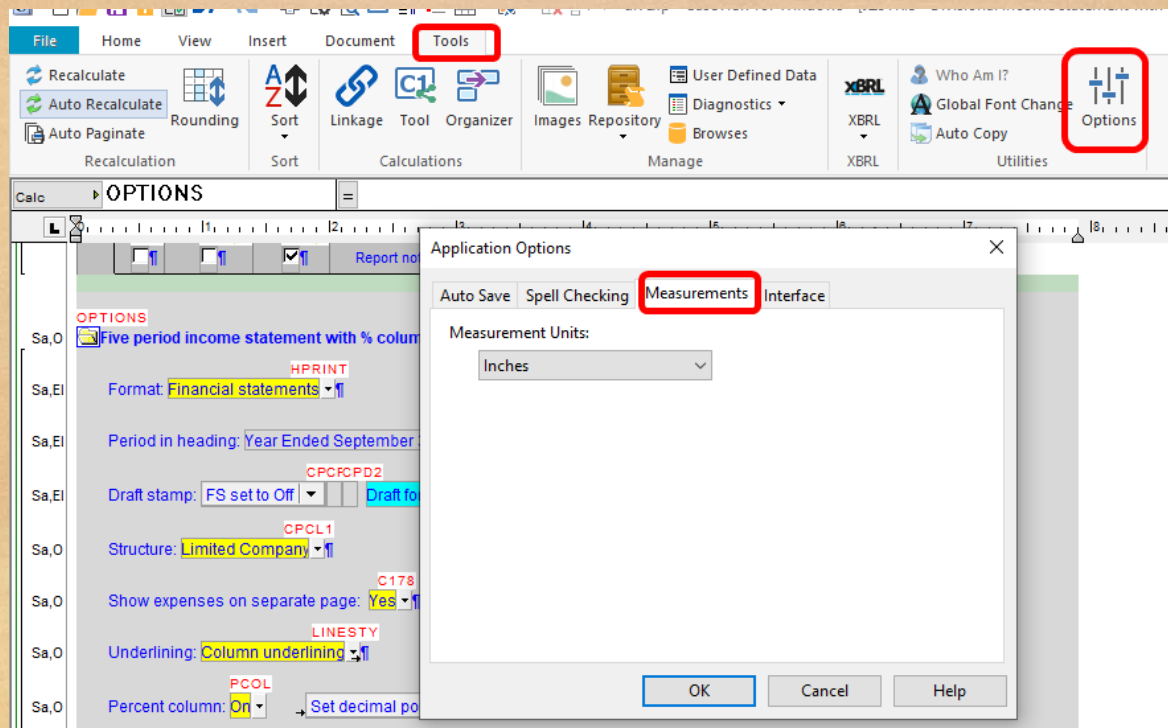
# Key performance indicators

- Did you know you can add key performance indicators to your financial statements?



# Remember inches not centimetres

- Just a reminder if you are prompted for unit of measurement when opening CaseView for the first time in CaseWare 2019 to select “imperial” not “metric”.



# Updating the checklists – use “quick method”

- Unless you are customizing your checklists use the “quick method” to replace your existing resource centre and checklist master files when updates are available.





# Thank you for enjoying a cup with us

Questions, comments or feedback:

Email: [webinar@Jazzit.com](mailto:webinar@Jazzit.com)

Website: [www.jazzit.com](http://www.jazzit.com)

Sales: 1-866-584-2537

Fax: 1-403-670-7590

